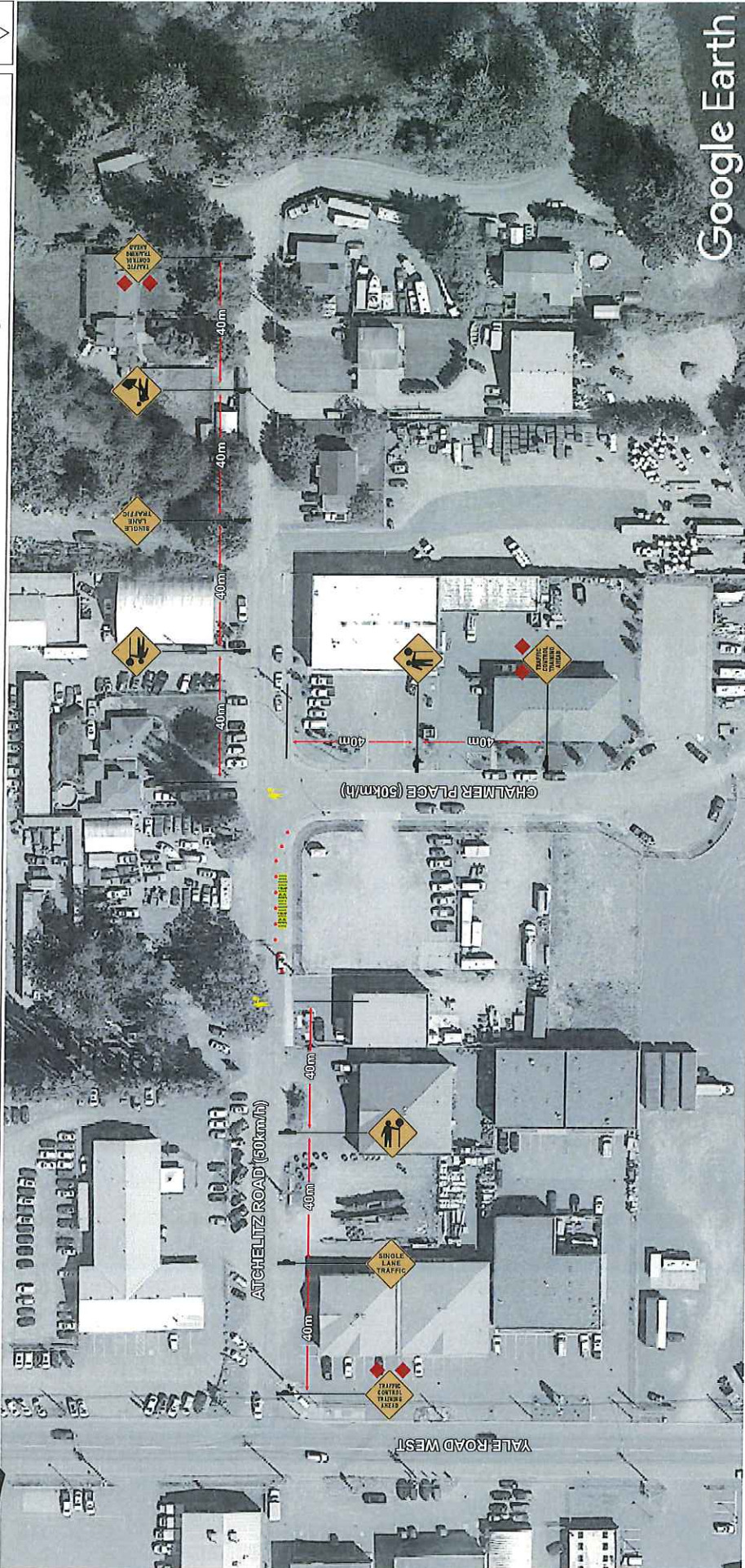


Traffic Control Plan - Traffic Control Training - January 18th & February 5th - Streetwise



Streetwise
TRAFFIC CONTROLLERS™
TRAFFIC PLAN

TRAFFIC CONTROL PLAN
DATE OF LAST REVISION
2017-01-05

Contractor Name:	Streetwise Traffic Controllers	TCP #	TCP 1	Date:	Jan. 18 & Feb. 5, 2017
Job Description:	Traffic Control Training				
Contractor Contact:	Angelia Fox	Phone:	778-552-7778	Email:	Angelia@StreetwiseTraffic.ca
Traffic Supervisor Contact:	Angelia Fox	Phone:	604-858-7730	Email:	Angelia@StreetwiseTraffic.ca
Traffic Plan Contact:	Tehjay Fox	Phone:	604-799-6750	Email:	Tehjay@StreetwiseTraffic.ca

LEGEND

	TRAFFIC CONTROL PERSONNEL		TRAFFIC BARREL
	SIGN STAND (TRIPOD)		TUBULAR MARKER - TYPE D
	SIGN STAND (WINDMASTER)		TRAFFIC CONTROL VEHICLE
	SIGN FLAGS		FLASHING ARROW BOARD (FAS)
	CLASS 1 BARRICADE		EXISTING BUS STOP CLOSED
	WORKZONE		RELOCATED BUS STOP

DRAWING SPECIFIC NOTES

- All traffic control shall conform to the TCM and the latest catalogue for Standard Traffic Signs
- Signs shown are representations of signs only and the MOTT Construction Sign Catalogue should be used for detailed sign design
- All distances shown are in meters and are the minimums except as otherwise indicated
- All work shall be covered or removed while the works are in effect
- Active Work Zones and Hazards shall be delineated to the maximum extent possible with cones, tubular markers and the travelling public
- Maximum distance between cone/delineator/barrel should be 10m
- Tubular markers and signs will be double based and well secured during windy conditions
- All signs shall be illuminated during the night
- These papers are best printed on a tablet (11x17) page size

GENERAL NOTES

- All traffic control shall conform to the TCM and the latest catalogue for Standard Traffic Signs
- Signs shown are representations of signs only and the MOTT Construction Sign Catalogue should be used for detailed sign design
- All distances shown are in meters and are the minimums except as otherwise indicated
- All work shall be covered or removed while the works are in effect
- Active Work Zones and Hazards shall be delineated to the maximum extent possible with cones, tubular markers and the travelling public
- Maximum distance between cone/delineator/barrel should be 10m
- Tubular markers and signs will be double based and well secured during windy conditions
- All signs shall be illuminated during the night
- These papers are best printed on a tablet (11x17) page size